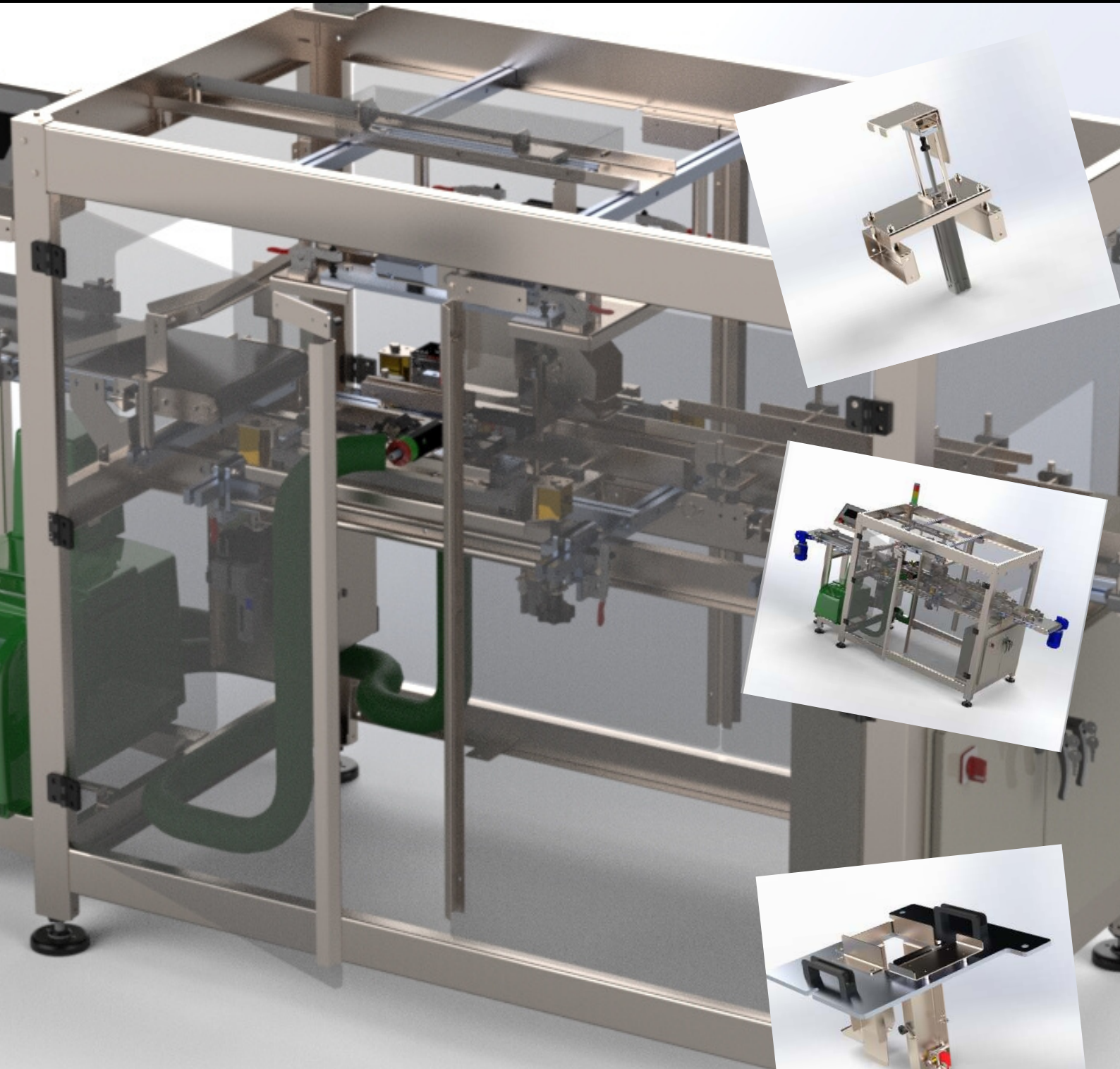




MODEL 1001 M

MANUAL CARTONER
WORLD STANDARD
PACKAGING MACHINE SOLUTIONS



The machine was developed and designed for the entry-level market to close Display Cartons with an automatic Gluing System.

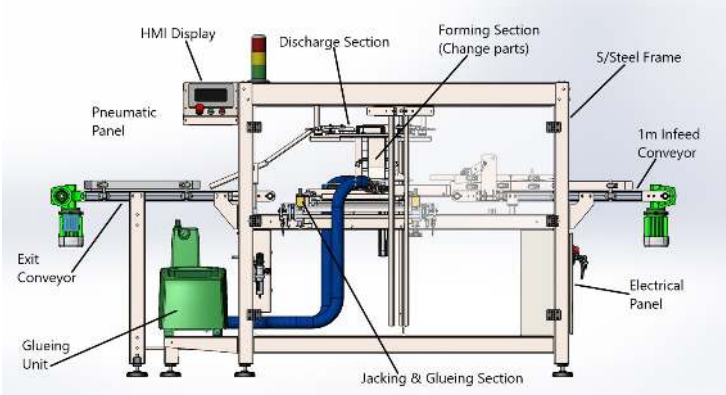
www.vannpax.co.za
+27 21 868 0118
info@vannpax.co.za

Unit 4B
Winelands Industrial Park
Driebergen Street, Paarl, 7646



MODEL 1001 M

**MANUAL CARTONER
WORLD STANDARD
PACKAGING MACHINE SOLUTIONS**



1001 MANUAL MACHINE:

Operators need to load the pouches or product manually into the cartons and place the cartons with the top flap open onto the infeed guides. Then the operators push the cartons manually forward or they can place open cartons on an infeed conveyor.

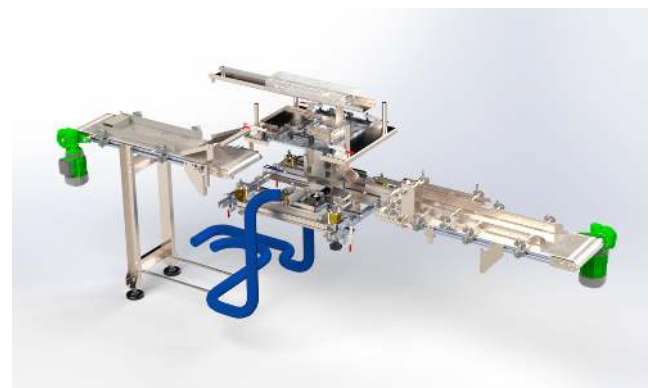
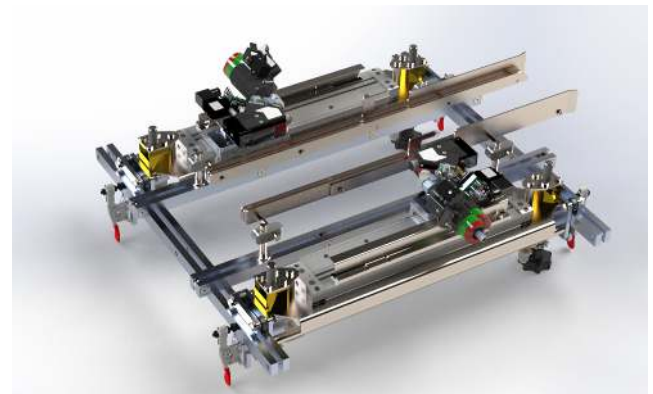
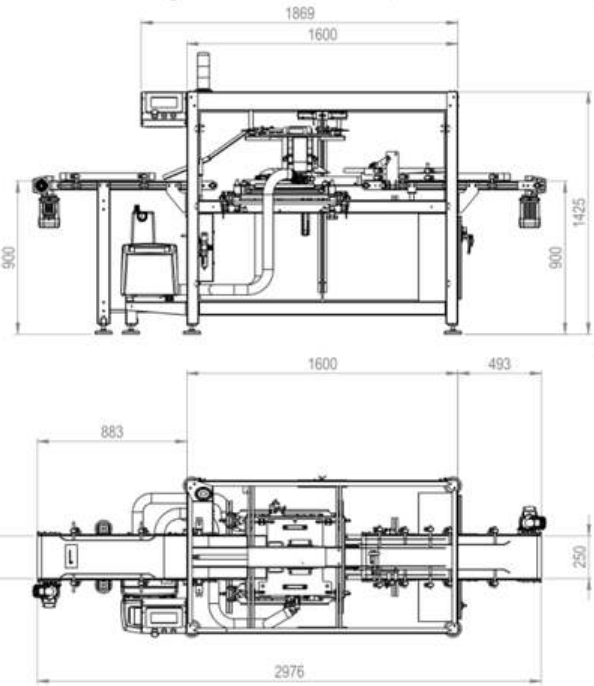
The "product present" sensor will detect the carton in the forming box and the glue will be applied automatically onto the glue-flaps.

The carton will be pushed into the forming box to close the flaps and the next cycle will begin.

Machine dimensions:

Cartoner only: 1869L x 1657H x 900W MM

Cartoner with conveyor: 2976L x 1657H x 900W MM



- Speed: Up to 30 cartons per minute depending on the product and operator
- Electricity: 230V AC
- Control System: Delta- PLC, 7" HMI, Drive
- Pneumatics : Festo
- Glue Unit: Robatech
- Safety Doors: Safety doors with switches
- Formats: No tools for forming box
- Maintenance: Low maintenance
- Design : Open and small footprint